

NETS & NET HOSTING PRESENTATION BY KK7BRR AND W7JSM

- Comes from “Network.”
- Scheduled Net: Gathering on the air at a set date, time and frequency.
- Club Directed Social Net: Promotes community building and skill building.
- Other formats exist: Traffic Nets, ARES Nets, Emergency Nets, Undirected Nets, etc.

WHAT IS A NET?

HOW DO I PARTICIPATE IN A NET?

lakewashingtonhamclub.org/repeaters

Step 1: *Program your radio with the details you need to be heard on our repeaters. All the frequencies, offsets & tones, as well as All Star and Echolink Node Numbers are available on the club website.*

Lake Washington Ham Club

Repeaters

Members

Calendar

Exams

Resources

About

Repeaters

Kirkland / Rose Hill Repeater System

Analog repeaters

BAND	RX FREQ.	TX OFFSET	PL TONE	LINKED	REPEATER SITE
6M	53.170 MHz	-1.7 MHz	100.0	Yes	Rose Hill
2M	145.490 MHz	-0.6 MHz	103.5	Yes	Rose Hill
1.25M	224.360 MHz	-1.6 MHz	103.5	Yes	Rose Hill
70cm	441.075 MHz	+5.0 MHz	103.5	Yes	Rose Hill



HOW DO I PARTICIPATE IN A NET?

lakewashingtonhamclub.org/repeaters

- What if I don't have a radio yet?
- What if I can't hit the repeaters?
- What if I don't want to be stuck in my shack?

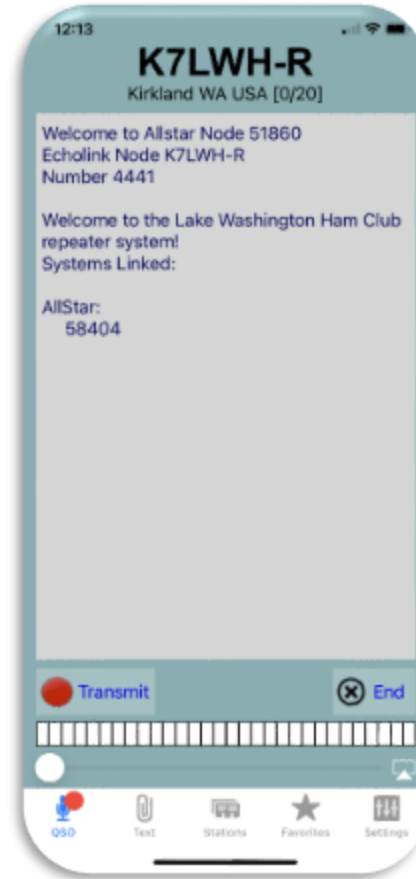
Echolink and AllStar

The Kirkland analog FM repeaters may also be accessed via Echolink (node #4441 K7LWH-R) or via AllStar (node #51860).



Display Configuration [CPU: 99°F, 37.6°C @ 11:30]
[Weather conditions for Kirkland, WA 98033: 69°F, 20°C / Sunny]

Node 51860 => K7LWH 145.49 Kirkland WA Bubble Chart IsNodes						
Node	Node Information	Received	Link	Direction	Connected	Mode
51860	COS-Detected					
572810	KJ7JXM Arlington, WA	000:08:31	ESTABLISHED	IN	00:34:26	Transceive
51765	W7JSM 430.425 Woodinville, Wa, USA	Never	ESTABLISHED	IN	00:38:26	Transceive
56895	W7PEZ Cottage Lake, WA	Never	ESTABLISHED	IN	00:33:26	Transceive
58404	N7RLV Vashon, Washington	Never	ESTABLISHED	IN	24:34:07	Transceive
3374036	KC2STO [EchoLink 374036]	Never	ESTABLISHED	IN	00:03:45	Transceive



Example: KK7BRR uses Echolink on her iPhone and Windows laptop, at home and while out of town.



Echolink.org

KK7BRR's iPhone running Echolink.

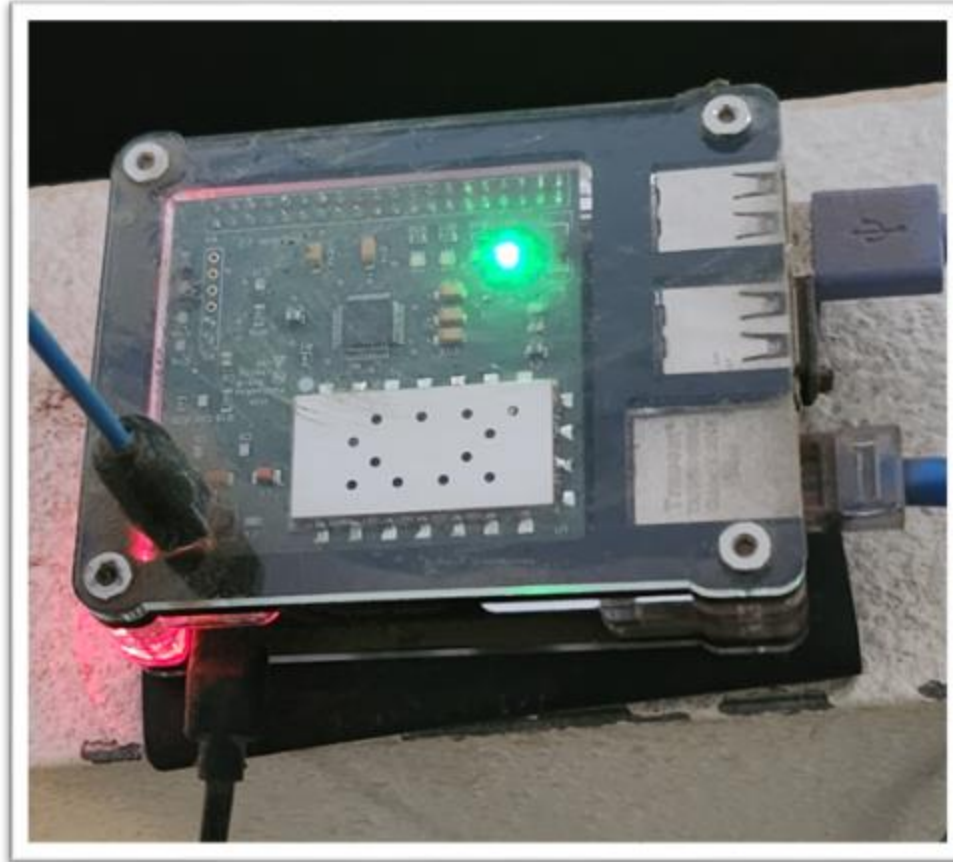
HOW DO I PARTICIPATE IN A NET?

lakewashingtonhamclub.org/repeaters

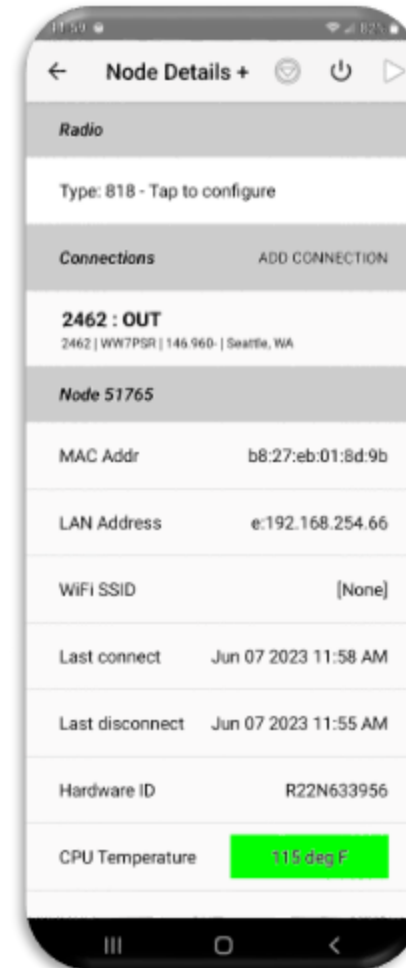
Example: W7JSM uses AllStar at home. He does not have to stay in his ham shack to participate in nets. He can use his HT and move freely about his home.



Allstarlink.org



W7JSM's Clearnode



HOW DO I PARTICIPATE IN A NET?

lakewashingtonhamclub.org/calendar

Step 2: Find the Nets you'd like to participate in on our club calendar.

Lake Washington Ham Club

Repeaters

Members

Calendar

Exams

Resources

About

Health and Wellness Net — daily at 11 AM

Social Evening Net — Tuesday 7PM

Louie Net — Wednesday 7PM

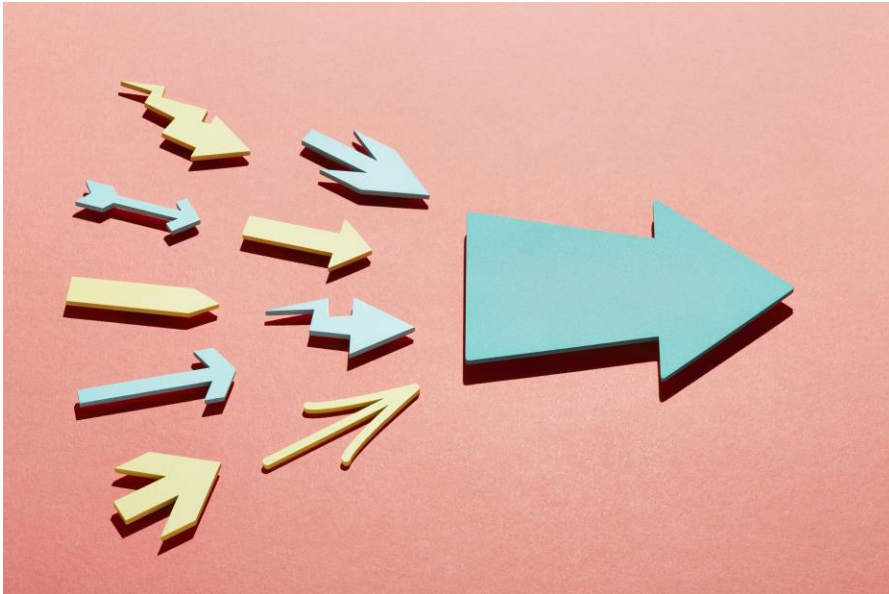
Informal Round Robin — Friday 7PM

(Times current as of 13 Feb 2024)

SUN	MON	TUE	WED	THU	FRI	SAT
28	29	30	31	1 Daily net	2 Daily net Round Robin	3 Daily net
4 Daily net	5 Daily net	6 Daily net Evening net	7 Daily net Louie Net	8 Daily net	9 Daily net Round Robin	10 Daily net
11 Daily net	12 Daily net	13 Daily net Evening net	14 Daily net Louie Net	15 Daily net	16 Daily net Round Robin	17 Daily net
18 Daily net	19 Daily net	20 Daily net Evening net	21 Daily net Louie Net	22 Daily net	23 Daily net Round Robin	24 Daily net
25 Daily net	26 Daily net	27 Daily net Evening net	28 Daily net Louie Net	29 Daily net	30 Daily net Round Robin	1

HOW DO I PARTICIPATE IN A NET?

Step 3: *Follow Net Protocol:*



- ▶ Wait until Net Control calls for check-ins.
- ▶ Check in one at a time with your callsign and name.
- ▶ Wait for your turn to check in, then give your report and end with your callsign, handing it back to Net Control.
- ▶ “Comment” / “Break” to interrupt the flow, to ask a question or to alert to an emergency.

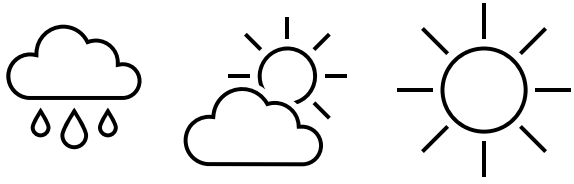
BENEFITS OF PARTICIPATING ON A NET:

- ▶ Meet fellow hams on the air!
- ▶ Test out your equipment
- ▶ Callsign practice: Get familiar with other stations' callsigns, and practice your skills using the phonetic alphabet.
- ▶ Increase your familiarity with ham lingo and procedures.
- ▶ Reduce "mic fright"
- ▶ Ask questions/meet mentors

<i>A – Alpha</i>	<i>J – Juliet</i>	<i>S – Sierra</i>
<i>B – Bravo</i>	<i>K – Kilo</i>	<i>T – Tango</i>
<i>C – Charlie</i>	<i>L – Lima</i>	<i>U – Uniform</i>
<i>D – Delta</i>	<i>M – Mike</i>	<i>V – Victor</i>
<i>E – Echo</i>	<i>N – November</i>	<i>W – Whiskey</i>
<i>F – Foxtrot</i>	<i>O – Oscar</i>	<i>X – X-Ray</i>
<i>G – Golf</i>	<i>P – Papa</i>	<i>Y – Yankee</i>
<i>H – Hotel</i>	<i>Q – Quebec</i>	<i>Z – Zulu</i>
<i>I – India</i>	<i>R – Romeo</i>	

The International Telecommunications Union
Standard Phonetic Alphabet





RAIN OR SHINE NETS

- ▶ In-person meetups at local parks
- ▶ They allow hams to practice their skills outside
 - ▶ How to use their mobile / portable GoBoxes and other rigs + antennas
 - ▶ How to set up their rig in varied terrain and weather conditions, deal with uncontrolled environment
 - ▶ Mentoring often happens in person
- ▶ Net Control Operators host our Health and Wellness Net from the park, often in a “party line,” creating great morale (it’s fun!)
- ▶ These events inspire non-licensed individuals to study up, get their ticket, and join us on the air
- ▶ If nothing else: free donuts, bagels and hot drinks!





Questions?
Comments?

- A Net Host is a Net Control Operator
- All traffic goes through Net Control
- Not all nets have a formal host or net control – but knowing how to control traffic is a valuable skill and is often needed in informal net settings.

WHAT IS NET HOSTING?

NET CONTROL OPERATORS

- ▶ **Volunteer** Net Control Operators donate their time and energy to run our nets and make them a friendly, welcoming space for all.
- ▶ In our club, a **volunteer** Net Manager oversees Net Operations, coordinates NCOs and helps find subs / steps in where needed.
- ▶ W7JSM John is LWHC's current Net Manager. (Thank you, John!)



December 2022

WHAT DOES NET CONTROL SAY?

Step 1: *Print out your Net Control Script (club-provided)*



Hi, This is Jackie, KK7EET, transmitting from Monroe, Washington.

Today is Monday, August 22, 2022, and I'll be the net controller for this evening's very first Youth Net hosted by the Lake Washington Ham Club. We meet every Monday at 6 PM to connect with other young Hams and talk about our interests.

We have 4 linked repeaters, located on Rose Hill in Kirkland. You can also connect to us online with All-Star or EchoLink. All the information you need to reach us is available online at LakeWashingtonHamClub.ORG.

This is a directed social net, so all calls will come through me. This net gives priority to young licensed radio operators and third-party traffic under the age of 18. If you are an older operator, and would like to say hello, please wait for the visitor check-in round to do so. If this is your first contact on the air, please let me know.

Please check in one at a time with your call sign and name. Please speak slowly and phonetically, as I'm logging each entry. Once I've logged several callsigns, I'll return to each one to give a report. Before pressing your PTT button, be sure to wait until the repeater drops the carrier to restart the timers. You'll hear the courtesy tones, then two seconds later, you'll hear the carrier drop. I'll demonstrate this now.

When you give your report, please limit the length of your report to three-minute segments, as that is when our repeaters time out and reset.

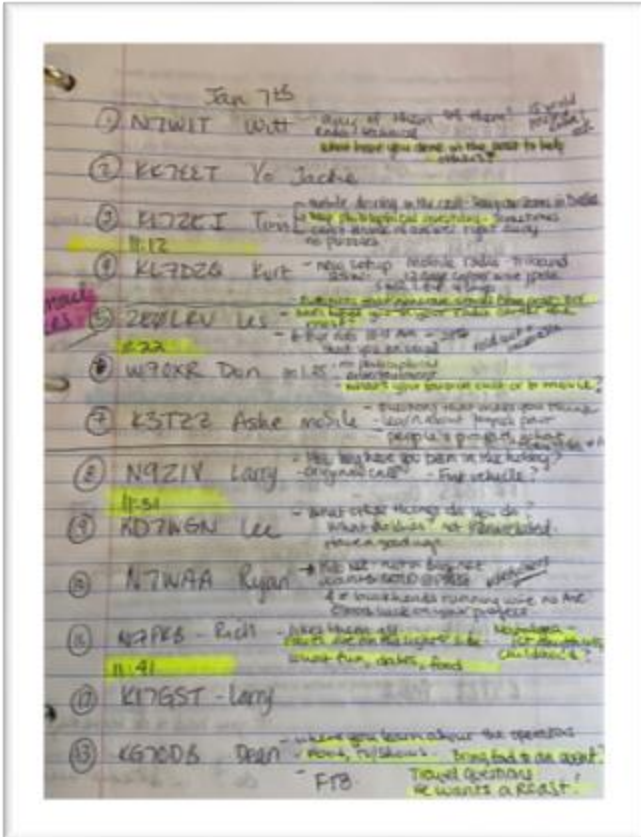
Today's question of the day is, if you had to be surrounded by 200 of something, what would it be?
We are ready to start the first round of check-ins, so please come ahead now with your callsign and name.

KEEP A LOG:

Step 2: Keep a log of stations checking in.

NCOs keep a log of check ins.

LWHC NCOs have their own ways of logging (on paper, on their computer or phone apps), plus a shared online log database.



2	kk7brr	jennifer				x	princess bride - poulso yesterday with fam
3	w7oxr	don				x	furnace broke - princess bride
4	nw7go	gregor				x	aliens - game over man - designed ant box, mnk net
5	n7pkb	rich			x	x	princess bride, top gun, make my day, punk dirty harry
6	kd7wgn	lee				x	mel brooks movies
7	kk7brs	doug				x	richest cat in the world - inch by inch life's a cinch, yard by yard is hard
8	ki7nri	david				x	leave the gun, take the cannoli - field strength meters
9	kg7odb	dean				x	forrest gump, godfather, airplane, office space, tv show beam me up scotty
10	kj7jxm	robert				x	i'll be back terminator, "two weeks" from total recall
11	wq7h	james				x	mel brooks, gonna need a bigger boat jaws - recovering
12	kl7dzq	kurt				x	godfather iii "just when i thought i was out, they pulled me back in" - sweats
13	kj7rab	kami				x	Say hello to my little friend, casablanca bogart, office space, tarantino, big
14	wa3db	db				x	raising arizona
15	kc2sto	charlie				x	go ahead punk, make my day, right turn clyde - 68f, sunny - fam dinner day lasagna, sausage, meatballs
16	k9bdc	brooks				x	once an idea has taken, downward is only way forward - inception is his fav
17	kk7hdn	mai				x	princess bride - death can not stop true love, just delay it a little while - libran sundays
18	kk7hcd	chris				x	princess bride "careful, people in masks can not be trusted" - car fixed
19	n7rlv	rob				x	little big men - have i left this world - sometimes the magic works, some time doesn't

RUN THE NET:

NCOs MUST identify every 10 minutes.

Step 3: *Run the net.*

Make lists of check-ins (4-6 stations per round), repeat the question of the day, acknowledge reports, provide friendly encouragement and let hams know they are valued.

Announcements:

Let folks know about any events coming up (announcements provided).



Wrap Things Up:

At the end of the net, wrap things up using the script, returning the repeaters to normal operations.




Net Control Script with W7JSM's Go Box at a LWHC Rain or Shine, Cottage Lake
Jennifer KK7BRR, dB WA3DB and Amy KI7LTY taking check ins at LWHC Rain or Shine Events

WHY DO WE HOST NETS?

- ▶ They build community.
- ▶ They allow hams to practice their skills.
 - ▶ How to give a signal report
 - ▶ How to adjust antenna placement or power settings, etc.
 - ▶ How to participate on the air when multiple stations are wanting to talk
 - ▶ Mentoring often happens over the air
- ▶ Nets are often the first place new hams make a contact. Net hosts file for a “First Contact Award” for the new ham from the ARRL after the net.
- ▶ Calling CQ can be scary. A directed social net provides safety and fun.



March 2023 Rain or Shine – Cottage Lake Park



Nets can also commemorate a Silent Key and keep their memory alive.

REUSE | RECYCLE
REPURPOSE | REIMAGINE

- THE LOUIE NET -
- WEDNESDAYS @ 7:00PM -

PERSONAL EXPERIENCE: KK7BRR

- ▶ First net (hosted): February 23, 2022
- ▶ New ham: licensed in November 2021
- ▶ Didn't have a great antenna yet – so I did net mobile (stationary), in view of the repeaters (for extra fun).
- ▶ My personal motivations: hams on the H&W net had become my friends, I was familiar with their callsigns and voices, and wanted to get more experience on the air.
- ▶ I was super nervous in the beginning! Would I hear the callsigns right? Would I get tongue-tied? Would I make a huge mistake?
- ▶ Coming up with a question of the day can be hard!



I PERSEVERED:



- ▶ I hosted regular nets for a whole year. I came up with a lot of questions of the day, and made a lot of friends!
- ▶ I now can serve as a substitute when my schedule allows. I have the skills to feel at ease, ready to jump in.
- ▶ I served as an example to my daughter, KK7EET, and inspired her to try her hand at net hosting for the Youth Net.
- ▶ I know how to handle traffic on the air, and can be helpful in an emergency situation.
- ▶ I have more confidence on HF.
- ▶ I'm fluent enough in the phonetic alphabet to be at ease when logging and making contact with other stations.

JOIN THE NET OPS TEAM

We are looking for more Net Hosts for our regular rotation!

No previous experience hosting nets required, only a willingness to learn. (It's always a good idea to listen to many nets before hosting).

If interested: Contact John W7JSM, at W7JSM@OUTLOOK.COM

